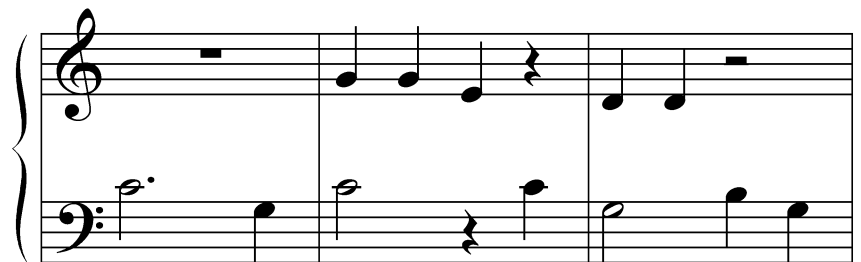
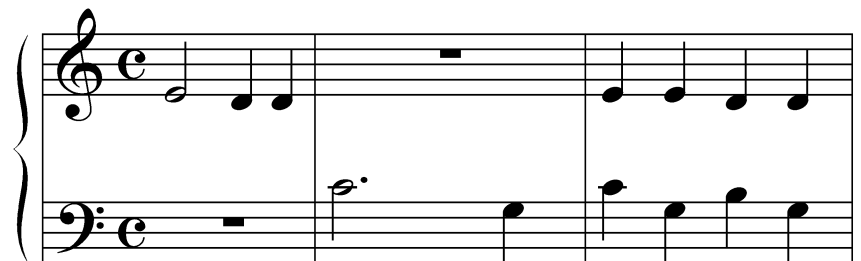


# Schlaf, Kindlein, schlaf

1. Schlaf, Kindlein, schlaf! Der Vater hüt'  
die Schaf'. Die Mutter schüttelt's  
Bäumelein, da fällt herab ein Träumelein.  
Schlaf, Kindlein, schlaf.

2. Schlaf, Kindlein, schlaf! Am Himmel  
geh'n die Schaf'. Die Sterne sind die  
Lämmelein, der Mond, der ist das  
Schäferlein. Schlaf, Kindlein, schlaf.

3. Schlaf, Kindlein, schlaf. So schenk'  
ich dir ein Schaf mit einer goldnen  
Schelle fein, das soll dein Spielgeselle  
sein. Schlaf, Kindlein, schlaf.



# Der Mond ist aufgegangen

1. Der Mond ist aufgegangen, die goldnen Sternlein prangen am Himmel hell und klar; der Wald steht schwarz und schweiget, und aus den Wiesen steigt der weiße Nebel wunderbar.

2. Wie ist die Welt so stille und in der Dämm'ring Hülle so traulich und so hold als eine stille Kammer, wo ihr des Tages Jammer verschlafen und vergessen sollt.

3. So legt euch denn, ihr Brüder, in Gottes Namen nieder, kalt ist der Abendhauch; verschon uns, Gott, mit Strafen, und lass uns ruhig schlafen und unsern kranken Nachbarn auch.

1. Spieler (eine Oktave höher)

Musical notation for the first player, one octave higher. It consists of two staves: a treble clef staff and a bass clef staff, both in 4/4 time. The treble staff has a whole rest in the first measure, followed by a quarter rest, a quarter note G4, and a quarter rest. The bass staff has a whole rest in the first measure, followed by quarter notes G2, A2, B2, C3, D3, E3, F3, and G3.

2. Spieler

Musical notation for the second player. It consists of two staves: a treble clef staff and a bass clef staff, both in 4/4 time. The treble staff has a whole rest in the first measure, followed by a quarter note G4, a quarter rest, and a quarter note F4. The bass staff has quarter notes G2, A2, B2, C3, D3, E3, F3, and G3.



1. Sp.

Musical notation for the first voice part. It consists of two staves: a treble clef staff and a bass clef staff, both in 4/4 time. The treble staff has a whole rest in the first measure, followed by quarter notes G4, A4, B4, and C5. The bass staff has quarter notes G2, A2, B2, C3, D3, E3, F3, and G3.

2. Sp.

Musical notation for the second voice part. It consists of two staves: a treble clef staff and a bass clef staff, both in 4/4 time. The treble staff has a whole rest in the first measure, followed by quarter notes G4, A4, B4, and C5. The bass staff has quarter notes G2, A2, B2, C3, D3, E3, F3, and G3.

1. Sp.

Musical notation for the first system, first staff (1. Sp.). The staff is in treble clef. The first measure contains a whole rest. The second measure contains a quarter note G4. The third measure contains a quarter rest. The fourth measure contains a whole rest.

2. Sp.

Musical notation for the first system, second staff (2. Sp.). The staff is in treble clef. The first measure contains a quarter note G4. The second measure contains a quarter note A4. The third measure contains a quarter note B4. The fourth measure contains a quarter note C5. The fifth measure contains a quarter note B4. The sixth measure contains a quarter note A4. The seventh measure contains a quarter note G4. The eighth measure contains a whole rest.

1. Sp.

Musical notation for the second system, first staff (1. Sp.). The staff is in treble clef. The first measure contains a whole rest. The second measure contains a quarter note G4. The third measure contains a quarter note A4. The fourth measure contains a quarter note B4. The fifth measure contains a whole rest.

2. Sp.

Musical notation for the second system, second staff (2. Sp.). The staff is in treble clef. The first measure contains a whole rest. The second measure contains a quarter note G4. The third measure contains a quarter note A4. The fourth measure contains a quarter note B4. The fifth measure contains a quarter note C5. The sixth measure contains a quarter note B4. The seventh measure contains a quarter note A4. The eighth measure contains a quarter note G4.

1. Sp.

Musical notation for the third system, first staff (1. Sp.). The staff is in treble clef. The first measure contains a whole rest. The second measure contains a quarter note G4. The third measure contains a quarter rest. The fourth measure contains a whole rest. The fifth measure contains a whole rest. The sixth measure contains a whole rest. The seventh measure contains a whole rest. The eighth measure contains a whole rest.

2. Sp.

Musical notation for the third system, second staff (2. Sp.). The staff is in treble clef. The first measure contains a quarter note G4. The second measure contains a quarter note A4. The third measure contains a quarter note B4. The fourth measure contains a quarter note C5. The fifth measure contains a quarter note B4. The sixth measure contains a quarter note A4. The seventh measure contains a quarter note G4. The eighth measure contains a whole rest.